

# INTERIORS *NOW*



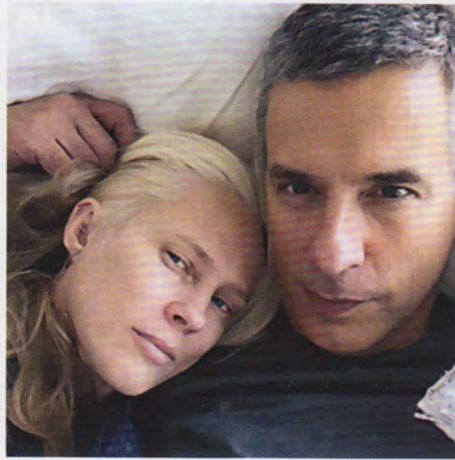
TASCHEN

# INTERIORS *NOW* 3

EDITED BY  
MARGIT J. MAYER

TEXT BY  
IAN PHILLIPS

TASCHEN



# TIINA LAAKKONEN & JON ROSEN

THEIR HOUSE IN AMAGANSETT, LONG ISLAND

**WHO** Laakkonen is a Finnish fashion stylist and design guru. Rosen is the owner of the digital postproduction company Nucleus Imaging. **WHAT** A 465m<sup>2</sup> (5,000 sq. ft.), five-bedroom, newly built house. **WHERE** On a 1.6-hectare (four-acre) plot surrounded largely by working farms. **COLLABORATION** The couple worked on the project with architects Nandini Bagchee and Tim Furzer. **FANS OF FINLAND** Rosen and Laakkonen visit several times a year. **FINNISH FINDS** Laakkonen's favorite is the Paavo Tynell floor lamp in the sitting room. "That's my trophy," she says. **TIINA THE STORE** Her eponymous Amagansett boutique sells the best of contemporary and vintage Nordic design. She particularly recommends the work of Ilmari Tapiovaara and Klaus Haapaniemi. **NEW DIRECTION** The buzz around their own house quickly led to two decorating commissions nearby.

PHOTOGRAPHED BY FRANÇOIS HALARD/TRUNK ARCHIVE PORTRAIT BY JON ROSEN





▲ Feeling blue: a painting Rosen inherited from his grandmother hangs above a Restoration Hardware sofa in one of the guest rooms. *Tablo* tray table designed by Magnus Löfgren. • Ein Gemälde, das Rosen von seiner Großmutter geerbt hat, hängt über dem Sofa von Restoration Hardware in einem der Gästezimmer. Tablett-Tisch *Tablo* von Magnus Löfgren. • Un tableau ayant appartenu à la grand-mère de Rosen est accroché au-dessus d'un canapé Restoration Hardware dans l'une des chambres d'amis. Table-plateau *Tablo* dessinée par Magnus Löfgren.

► "Jon has a really good eye for old light fixtures," declares Laakkonen. The industrial pendants in the kitchen are an eBay find. Dining table by Piet Hein Eek. • „Jon hat einen exzellenten Blick für alte Leuchten“, sagt Laakkonen. Die Industrielampen in der Küche sind eBay-Funde. Esstisch von Piet Hein Eek. • «Jon a le coup d'œil pour les luminaires anciens», déclare Laakkonen. Les suspensions industrielles dans la cuisine ont été trouvées sur eBay. Table de Piet Hein Eek.





# CONTACTS

## A

ABC HOME New York City, abchome.com  
ADAM MCCULLOCH adamcculloch.info, info@adamcculloch.info  
AGA agaliving.com  
ALAIN GILLES Brussels, alaingilles.com, info@alaingilles.com,  
T. +32 497 41 50 89  
ALEX COCHRANE ARCHITECTS London, alexcochrane.net,  
mail@alexcochrane.net, T.+44 20 7352 1194  
ANDREW MARTIN London, andrewmartin.co.uk, T. +44 20 7225 5100  
ANGEL SANCHEZ New York City, angelsanchezusa.com,  
angela@angelsanchezusa.com  
ANN SACKS TILE & STONE annsacks.com  
ANTONIO LUPI Stabbia, antoniolupi.it, lupi@antoniolupi.it,  
T. +39 0571 586881  
ANTRAX S.R.L. Resana, antrax.it, antrax@antrax.it, T. +39 0423 7174  
ARMEL SOYER Paris, armelsoyer.com, contact@armelsoyer.com,  
T. +33 1 42 55 49 72  
ARTEK Helsinki, stores at: artek.fi, info@artek.fi  
ARTIFORT Schijndel, artifort.com, info@artifort.com, T. +31 73 658 00 20  
ASTON MATTHEWS London, astonmatthews.co.uk,  
sales@astonmatthews.co.uk, T. +44 20 7226 7220  
ATTILALOU attilalou.com, contact@attilalou.com  
AXEL VERVOORDT Wijnegem, axel-vervoordt.com, info@axel-vervoordt.com

## B

BAGCHEE ARCHITECTS New York City, bagcheearchitects.com,  
info@bagcheearchitects.com, T. +1 718 384 0849  
BAIXA HOUSE Lisbon, baixahouse.com, T. +351 919 090 895  
BARBER WILSONS & CO. LTD. London, barwil.co.uk, info@barwil.co.uk,  
T. +44 20 8888 3461  
BDDW New York City, bddw.com, info@bddw.com, T. +1 212 625 1230  
BERNHARD WILLHELM Paris, bernhardwillhelm.com,  
info@bernhard-willhelm.com, T. +33 1 47 00 08 68  
BEST BEFORE Paris, bestbeforeparis.fr, bestbeforeparis@gmail.com,  
T. +33 01 42 74 23 05  
BIENNALE INTERIEUR Kortrijk, interieur.be, interieur@interieur.be  
BISAZZA S.P.A. Alte (VI), bisazza.com, T. +39 0444 707511  
BONALDO S.P.A. Villanova, bonaldo.it, bonaldo@bonaldo.it  
+39 049 9299011  
BRUSSELS FLEA MARKET Located at Jeu de Balle in Quartier Marolles,  
open daily from 6 a.m.  
BULTHAUP GMBH & CO. KG Bodenkirchen, bulthaup.de,  
T. +49 800 1004190

## C

CALDER FOUNDATION New York City, calder.org, contact@calder.org,  
T. +1 212 334 2424  
CAPPELLINI *Peacock Chair* by Dror Benshetrit, *Mr. B* by François  
Azambour, and *TWB Seat* by Raw Edges. See cappellini.it  
CARAVANE Paris, caravane.fr, info@caravane.fr, T. +33 1 44 61 04 20  
CARLOS ROUTH WODEHOUSE CONSTRUCTION CORP.  
Watermill, NY, wodehouseconstruction.com, wodehouse@optonline.net,  
T. +1 631 537 1897  
CHRIS COLEMAN Brooklyn, NY, ccinteriordesign.com,  
info@ccinteriordesign.com, T. +1 718 222 8984  
CHRISTOPHER SPITZMILLER, New York City, christopherspitzmiller.com,  
T. +1 212 563 1144  
CLASSICON GMBH Munich, classicon.com, T. +49 89 7481330  
CLEMENS TISSI Berlin, clemenstissi.com, mail@clemenstissi.com,  
T. +49 30 24724714  
COBERTOS DE PAPA – blankets from the Beira region.  
More information at: mobapi.co  
COLE AND SON LTD. London, cole-and-son.com,  
customer.service@cole-and-son.com, T. +44 20 7376 4628  
COLEFAX & FOWLER London, colefax.com, T. +44 20 7244 7427  
COR SITZMÖBEL HELMUT LÜBKE GMBH & CO. KG  
Rheda-Wiedenbrück, cor.de, info@cor.de, T. +49 5242 41020  
COWTAN & TOUT, New York City, cowtan.com, T. +1 212 647 6900

## D

D. PORTHULT dporthaultparis.com  
D'APOSTROPHE DESIGN, INC., New York City, dapostrophe.com,  
info@dapostrophe.com, T. +1 212 965 1077  
DANSK MØBELKUNST Copenhagen, dmk.dk, T. +45 33 32 38 37  
DAUM Paris, daum.fr, T. +33 1 53 05 12 29  
DESCIENCE LABORATORIES BY SIMREL ACHENBACH  
Brooklyn, NY, descienclab.com, simrel@descienclab.com,  
T. +1 718 383 0702  
DINESEN WOODEN FLOORS Redding, Denmark, dinesen.com,  
info@dinesen.com, T. +45 74 55 21 40  
DOMÉSTICO domesticodsd.com.ar, mail@domesticodsd.com.ar  
DOUG MEYER dougandgenemeyer.com, contact@dougandgenemeyer.com

## E

EDWARD BARBER & JAY OSGERBY London, barberosgerby.com,  
mail@barberosgerby.com, T. +44 20 7033 3884  
EFE ERENLER Berlin, efeerenler.com, T. +49 30 66301161  
EMERY & CIE emeryetcie.com, mail@emeryetcie.com

## IMPRINT

© 2013 TASCHEN GMBH

HOHENZOLLERNRING 53, D - 50672 KÖLN

WWW.TASCHEN.COM

To stay informed about upcoming TASCHEN titles, please subscribe to our free Magazine at [www.taschen.com/magazine](http://www.taschen.com/magazine), find our Magazine app for iPad on iTunes, follow us on Twitter and Facebook, or e-mail us for a sample copy at [contact@taschen.com](mailto:contact@taschen.com).  
Delve in and enjoy!

# INTERIORS *NOW*

EDITOR	MARGIT J. MAYER	LITHOGRAPH MANAGER	THOMAS GRELL
ART DIRECTOR	ANDRÉ M. WYST, BERLIN	FRENCH TRANSLATION	PHILIPPE SAFAVI, PARIS
AUTHOR	IAN PHILLIPS, PARIS	GERMAN TRANSLATION	KARIN JAEGER, MUNICH
PROJECT MANAGER	STEPHANIE PAAS	EDITORIAL ASSISTANT	FALKMAR K. FINKE

Front cover: The living room of Pierre Yovanovitch's apartment in Paris. Paintings by Marc Quinn and (on spine) Alex Katz.

Back cover: A Beverly Hills kitchen by Melinda Ritz with a portrait of TV chef Julia Child. Both photos: Stephan Julliard/Tripod Agency  
Styling: Ian Phillips

© 2013 VG Bild-Kunst, Bonn for the works of Alvar Aalto, Fernando and Humberto Campana, William N. Copley, Elger Esser, Alain Gilles, Herbert Hamak, Leiko Ikemura, Pierre Jeanneret, Johannes Kahrs, Alex Katz, Yves Klein, Magnus Löfgren, Ludwig Mies van der Rohe, Serge Mouille, Charlotte Perriand, Jean Emile Victor Prouvé, Kirstine Roepstorff, James Rosenquist, Carl Strüwe and Bernar Venet

© 2013 The Willem de Kooning Foundation, New York / VG Bild-Kunst, Bonn

© 2013 Eames Office, Venice, CA, [www.eamesoffice.com](http://www.eamesoffice.com), for the works of Charles and Ray Eames

© 2013 The Estate of Jean-Michel Basquiat / VG Bild-Kunst, Bonn

© 2013 The Andy Warhol Foundation for the Visual Arts, Inc. / Artists Rights Society (ARS), New York